



Novoferm Garage Door Range

PREMIUM GARAGE DOOR SOLUTIONS 2023



Intelligent Door Solutions



www.novoferm.co.uk



Steel Door Range

Steel Up & Over Doors
 Novoguard Doors – Secured by Design
 Side Hinged Doors
 Steel Personnel Doors



Steel Up & Over Doors



SCAN TO SEE MORE DETAILS

Up and over doors are a simple yet effective design that opens by kicking outwards then sliding upwards back along a track that runs along the ceiling. These doors can be both manual or automated for added convenience.

Our steel up and over garage doors are available in a range of designs, colours and finishes.

Our steel up and over doors are specially prepared to ensure the maximum lifespan. The quiet rollers and abrasive strips ensure smooth operation. Multiple spring assemblies ensure sturdiness and ease of use.

Smooth Operation

ALL DOORS available with either canopy or retractable spring assisted gear systems for smooth, safe and reliable operation.

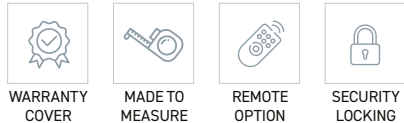
Safe and Secure

HIGH SECURITY twin strong locking bars with the option of a 4 point locking system also available.



Other benefits include:

- ☒ High Distortion Resistance
- ☒ Wide Range of Colours
- ☒ Automatic Operators Available



STEEL UP AND OVER DOORS

Styles

Novoferm Steel Up & Over Garage Doors are the classic choice for your home. They are manufactured from premium grade galvanized steel and finished in white powder coat or powder coat in one of our standard colours. Black euro handle fitted as standard.

Available in sizes up to 4877mm x 2286mm. Horizontal ribbed designs may vary from sizes 2438mm up to 2743mm on single door gear.



Berwick



Horizontal



Victor



Vertical



Horsham



Berkeley Vertical



Minster



9 Panel Georgian



Wentworth



Regency



Regency Glazed





Novoguard Doors



SCAN TO SEE MORE DETAILS

Novoguard Secured by Design doors and the 563 Novoguard system package are certificated to CS 5051 STS202 which is approved by ACPO (Association Of Chief Police Officers).

Novoguard doors featuring retractable lifting operation and including a 70mm steel fixing frame are available in any size up to and including 2438mm wide x 2134mm high.

Our Improved Security Doors:



Retractable Steel **Berwick**



Retractable Steel **Vertical**



Retractable Steel **Horizontal**



WARRANTY
COVER



MADE TO
MEASURE



SECURITY
LOCKING



SCAN TO SEE MORE DETAILS

Side Hinged Doors

Side hinged doors open as per a normal pedestrian door with two door leaves connected by hinges at the side to the main door frame. Customers can choose a 50/50 split with both doors of equal size, or an offset configuration, with one smaller personnel door.

Our side hinged doors are available in a range of patterns, surfaces, and colours, and customers can choose from an array of additional fittings.

All the door leaf frames are made from aluminium, guaranteeing maximum weather-resistance.

The robust hinges will provide long-term opening and closing that is dimensionally accurate. Choose whether to open both of the doors or just the active leaf and choose from a range of customisable fittings to personalise your doors.

Features and Benefits

- Centre overlap to help prevent forced entry and reduce draughts
- High Security Euro profile mortice lock
- Twin shoot bolts top and bottom for added security
- Stays to prevent the door opening further than 110 degrees
- All side hinged doors are supplied complete with 50mm frame
- Doors open outwards only, with the lock on the right when viewed from the outside
- Left hand opening option available
- Side hinged doors are available in 50/50 split or 2/3rd opening ratio with the exception of the Georgian design
- Side hinged doors are bespoke and made to order.



WARRANTY
COVER



MADE TO
MEASURE



SIDE HINGED DOORS

Designs



Berwick



9 Panel Georgian



Horsham



Regency Glazed



Vertical



Regency



Victor



Berkeley Horizontal



Berkeley Vertical



Wentworth

STEEL DOORS

Colours & Glazing

Essential Colours

3 of the best selling stunning textured steel finishes

Traffic White
RAL 9016

Jet Black
RAL 9005

Anthracite Grey
RAL 7016



Signature Range

Ral colours available on request

Standard Colours

A choice of 10 stunning textured steel finishes available in our most popular standard colours.

Midnight Blue
RAL 5011

Balmoral Green
RAL 6005

Chartwell Green
BS4800

Monarch Red
RAL 3003

Conker Brown
RAL 8017

Signal Grey
RAL 7004

Agate Grey
RAL 7038

Light Grey
RAL 7035

Window Grey
RAL 7040

Stone Grey
RAL7030

Elite Colours

A choice of 6 stunning colours in a textured steel finish available in a brand new exciting colour range for those who want something a little more special!

Clay Brown
RAL 8003

Oxford Blue
RAL 5013

Cherry Brown
Chroma 3353

Slate Grey
RAL 7015

Fir Green
RAL 6009

Cream
RAL 9001

Premium Finish

Premium grade galvanised steel in woodgrain effect Golden Oak and Rosewood*.

Golden Oak

Rosewood

*Available in some designs only, please check with your installer. All colour samples depicted in this brochure are as close to the original manufacturer's colours as possible. Garage doors supplied may vary in colour from the brochure representation.

Glazing

The following Novoferm side hinged and up and over doors are available with your choice of glazing options



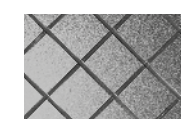
TRANSPARENT



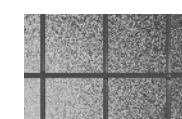
STIPPLED



BLACK



DIAMOND LATTICE



SQUARE LATTICE



QUEEN ANNE LATTICE



Steel Personnel Doors

Steel Personnel Doors pre-framed and come complete with a Euro profile night latch and deadlock and four anti-drop anchored bolt hinges per door leaf. Doors open outwards only, with the lock on the right when viewed from the outside.

Novoferm personnel doors are available in the

following finishes to match the door ranges: Pre-finished, Painted, Golden Oak, Rosewood.

All door leaf frames are made of aluminium and guarantee maximum weather resistance, while robust hinges provide long-term, dimensionally accurate opening and closing.



Vertical



Georgian



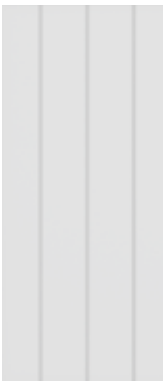
Horizontal



Regency



Horsham



Victor



WARRANTY COVER



MADE TO MEASURE



GRP Door Range

Up & Over GRP Doors
Side Hinged GRP Doors

GRP Doors

GRP doors are composed of Glass Reinforced Plastic. Available as up and over and side hinged doors, GRP doors are lightweight, durable, and sturdy.

These doors come with excellent finished edge detail, and remote opening options.

Our GRP doors are supported by a solid steel frame, preventing frame rotting and weakening. Wood effects can be replicated, lending these doors a natural look that's indistinguishable from the real thing.



SCAN TO SEE MORE DETAILS

Up & Over GRP Doors

These doors are available in a choice of styles to suit all properties.



Glossop | White Gloss



Lydbrook Glazed | Honey Beech



Virginia | Bleached Oak



Winchester | Bleached Oak



Chertsey | Gloss Magnolia



Shildon | White



WARRANTY COVER



MADE TO MEASURE



REMOTE OPTION



SECURITY LOCKING



FINISHED EDGE DETAIL

Up & Over Timber Grain Effect GRP Doors

LOW MAINTENANCE Available in low maintenance smooth colour and incredibly lifelike timbergrain effect woodtones, these doors are virtually maintenance free.



Hamilton | Light Oak



Newbury | Golden Brown



Kentley | Teak

Side Hinged GRP Doors

Our handmade Side Hinged GRP Doors are manufactured and finished to a high standard and come with the following features:

- Centre Style Between Leaves to Prevent Forced Entry
- Heavy-Duty Steel Hinges for Maximum Security
- Weather Seals Between Frame and Leaves for Draught Reduction
- Euro Dead Locking Latch and Black Lever Handles as Standard



Virginia Woodgrain | Bleached Oak



Lydbrook Woodgrain | White



Shildon Woodgrain | Ebony



Glossop | Gloss Magnolia



Virginia Personnel | Teak

GRP SIDE HINGED DOORS ARE BESPOKE AND MADE TO ORDER

GRP DOORS

Colours and Glazing



Novoferm GRP Colour Range

| | | | | | | | | |
|-----------------|--------------------|--------------|--------------|---------------|-----------------|----------------|-----------------|---|
| | | | | | | | | GRP DOORS ARE BESPOKE AND MADE TO ORDER |
| White Woodgrain | Magnolia Woodgrain | Bleached Oak | Red Mahogany | Dark Mahogany | Light Oak | Dark Oak | Irish Oak | |
| | | | | | | | | |
| Honey Beech | Teak | Rosewood | Golden Brown | Ebony | Anthracite Grey | Woodgrain Blue | Woodgrain Green | Woodgrain Red |

All colour samples depicted in this brochure are as close to the original manufacturer's colours as possible. Garage doors supplied may vary in colour from the brochure representation.

Glazing

| | | | | | |
|-------------|----------|-------|----------------|---------------|----------------------|
| | | | | | |
| TRANSPARENT | STIPPLED | BLACK | DIAMOND LEADED | SQUARE LEADED | BLACK DIAMOND LEADED |

Warranty and Maintenance

Up and Over Garage Door Finish

Our steel up and over doors are fully finished with a powder coat paint. Weathering and sun exposure can cause the finish to fade. We guarantee 5 years steel doors finished fully and that any fading will be minimal and uniform, providing the door is maintained in accordance to the care and maintenance advice.

Side Hinged Garage Door Finish

Our sectional doors are fully finished with a sprayed colour finish or with a foil backed laminated finish. Weathering and sun exposure can cause the finish to fade. We guarantee the finish on doors for 5 years and that any fading will be minimal and uniform providing the door is maintained in accordance to the care and maintenance advice.

Roller Garage Door Lath Finish

Our Roller doors come in two finishes; a polyester powder coat and a woodgrain laminate. Weathering and sun exposure can cause the laths to fade. We guarantee the finish for 5 years and that any fading will be minimal and uniform, providing the door is maintained in accordance to the care and maintenance advice. Please note: due to the rolling action of the door, surface marking can be caused by security locks, dust and debris. This does not constitute as a product fault and performance is not affected in any way.

Sectional Garage Door Finish

Our sectional doors are fully finished with a sprayed colour finish or with a foil backed laminated finish. Weathering and sun exposure can cause the finish to fade. We guarantee the finish on doors for 5 years and that any fading will be minimal and uniform, providing the door is maintained in accordance to the care and maintenance advice.

Our promise

During the warranty period, we undertake to rectify any defects to the Novoferm product, which can be proven to be attributed to a material or manufacturing defect.

We promise, at our discretion, to either exchange the defective merchandise or repair.

Replacement parts remain our property.

Warranty Requirements

This warranty only covers damage to the purchased garage door, or garage door operator. You will be required to show a fully completed warranty service passport (service to be conducted by a qualified engineer annually), together with a receipt of purchase, which correspondingly substantiates your right to claim under warranty. In the event of a claim, please contact the company who supplied/installed the doors. They will raise the warranty on your behalf.

During the claims process, a site inspection may be required. For this we will send an independent assessor. Should this inspection indicate the fault was not caused by a manufacturing defect, you will be liable for the cost of a non-warranty call out. The cost of the call out will be advised prior to the arranged visit.

Novoferm will not accept consequential costs for installation or de-installation, inspection of parts, transport, and postage costs.

Up and Over, Side Hinged and Sectional Doors - What is covered?

Subject to the terms and conditions outlined in this document. Novoferm garage doors offer the warranty:

- 10 Years – Safe and reliable operation (for use up to 5 open/close cycles per day)
- 10 years – Structural integrity of door panels
- 10 years – Panel corrosion
- 10 years – retractable, sectional and side hinged doors

(2 years on canopy doors) on immovable frame parts

- 5 years – Steel Doors
- 5 years – Insulated sectional doors
- 2 years – movable and mechanical parts (including, but not limited to, springs, rollers wheels, locking points, rods/cables, barrel and locking mechanisms)

Insulated Roller Door - What is covered?

Subject to Terms and conditions outlined in this document. Insulated roller doors offer the following warranty:

- 5 years – Motor
- 5 years – control unit
- 2 years – remote controls and accessories (excluding batteries, bulbs and fuses)
- 5 years – lath finish
- 2 years – movable and mechanical parts (including but not limited to locking straps and rings, safety brake.)

Care and maintenance

Your door should be kept clean, with any stains removed as soon as possible. You should also ensure the door does not come into contact with any caustic or acidic substance, which could damage the door surface or structure. Your door should be cleaned thoroughly approximately every 2-3 months (in coastal areas or areas close to large bodies of saltwater, this should be done weekly) using warm water and a soft cloth or sponge. Allow to dry naturally. Never use detergent, abrasive, caustic, or solvent-based cleaners. Lubricate all springs, latches, wheel spindles, and pivot points using a light lubricating oil (e.g., 3-in-1). Take care not to allow oil to drip onto the face of the door. Ensure track runners are clean and free from obstacles at all times. Check moving parts for signs of wear. If any wear is detected, arrange for these to be replaced as soon as possible (failure to replace these parts can invalidate your warranty). Do not paint springs or any moving parts. For automated doors (retractable), do not operate the door when not within visual range.

Corrosion

Doors situated in 'high corrosive' areas such as within 3 miles of the sea or a large body of saltwater are not covered for rust or corrosion of steel parts. Cleaning of the doors is especially important in these locations.

All Novoferm Garage Doors - What is not covered?

- Improper installation, negligent care and maintenance - doors which have not been maintained or had annual maintenance/ servicing
- Improper initial and subsequent operation
- Negligent or wanton destruction
- External influences, such as: fire, water, salts, alkaline solutions, acids and any abnormal environmental influences, sunlight
- Mechanical damage, through improper transport and fitting, or through falling or hitting objects
- Repair by non-qualified persons
- Using non-Novoferm parts without the written approval of the manufacturer
- Removal of the product number, or making it unidentifiable
- Application of additional, non-approved weights or infills
- Failure to remove the protective film or packaging provided with the product, where applicable
- Failures caused by extreme or abnormal weather conditions

Visual standards check

Visual standard checks must be carried out prior to a warranty submission. This check should be carried out in natural daylight, not direct sunlight, standing at a distance of 3m from the door to view the overall appearance. Doors are acceptable if the following are not readily visible on the face of the door:

- Marks or distortion associated with the manufacturing process
- Minor indentations, marks, or scuffs on the surface
- Paint or Stain Blemishes

Operators and Accessories Warranty

Our promise:

During the warranty period, we undertake to rectify any defects to the Novoferm product, which can be proven to be attributed to a material or manufacturing defect. We promise, at our discretion, to either exchange the defective merchandise or repair it. Replacement parts remain our property.

Warranty Requirements

This warranty only covers damage to the purchased garage door operator. You will be required to show a receipt of purchase; this substantiates your right to claim under warranty. In the event of a claim, please contact the company that supplied/installed the doors. They will raise the warranty on your behalf. During the claims process, a site inspection may be required. For this, we will send an independent assessor. Should this inspection indicate the fault was not caused by a manufacturing defect, you will be liable for the cost of a non-warranty call out. The cost of the call out will be advised prior to the arranged visit. Novoferm will not accept consequential costs for installation or de-installation, an inspection of parts, transport and postage costs.

What is covered?

Subject to the terms and conditions outlined in this document. Operators and accessories offer the following warranty:

- 5 years – Novomatic operator (823/563/423)
- 5 years – Novoport operator (sectional doors)
- 5 years – Novorol and Teleco control unit (roller doors)
- 2 years- all remote control parts and accessories (excluding batteries, bulbs and fuses)

What is not covered?

- Improper installation, negligent care and maintenance.
- Improper initial and subsequent operation
- Negligent or wanton destruction.
- External influences, such as: fire, water, salts, alkaline solutions, acids and any abnormal environmental influences.
- Mechanical damage, through improper transport and fitting, or through falling or hitting objects.
- Repair by non-qualified persons.
- Using non-Novoferm parts without the written approval of the manufacturer.
- Removal of the product number, or making it unidentifiable.
- Operators used upon a door which exceeds rated lifting capacities.
- Failure to remove the protective film or packaging provided with the product, where applicable.
- Failures caused by extreme or abnormal weather conditions.

Terms and Conditions

Warranty

In the unlikely event of a warranty claim becoming necessary please contact the dealer or distributor who supplied the door.

To enable your claim to be processed without delay you should provide the following information:

- Your name, address and contact telephone number
- The original invoice and date of purchase
- A description of the door, the door type and the product number
- A description of the reason for the claim

Your dealer will then supply details of your claim, together with a copy of the warranty card supplied with the door and proof of purchase, to the warranty department at Novoferm UK.

An assessment of the claim will be made. This may mean Novoferm will need to come and inspect your door at your premises.

In the event that there is no legitimate claim under the terms of the warranty you will be liable for the costs of this visit. It is essential that you take note of the care and maintenance instructions provided with your door and you follow these instructions throughout the lifetime of your door. It is essential that you take note of the care and maintenance instructions provided with your door and you follow these instructions throughout the lifetime of your door.

The warranty does not cover:

- Improper installation
- Normal wear and tear
- Priming and other surface protection treatments
- Negligent or wanton destruction
- Incorrect or too late applied surface protection treatments
- Repair by a non-qualified installer
- Use of non-Novoferm parts without the approval of Novoferm
- Damage or removal of the product number or making it unidentifiable
- Improper operation
- External influences, such as fire, salts, water, sun, alkaline solutions, abnormal environmental influences
- Mechanical damage caused by improper transport or installation

All dark colours which are exposed to direct sunlight should be avoided. Dark coloured doors may undergo expansion due to heat absorption. Such instances are not covered by the guarantee, however normal performance will revert when the door has cooled down if the heat absorption has affected the door's performance.

All colour samples depicted in this brochure are as close to the original manufacturer's colours as possible. Garage doors supplied may vary in colour from the brochure representation.

Prices

All orders are accepted on the understanding that the goods will be subject to the prices ruling at the time of delivery, unless other terms are specifically agreed. All prices are in £ sterling and exclude VAT.

A 25% handling charge applies to all unwanted items on standard stock items only. Items must be returned unopened and in an unused condition.

All returns are subject to acceptance by Novoferm UK Limited.

Specification

Due to the progressive outlook of the Novoferm Group we reserve the right to alter specifications to design and manufacture without notification. All specifications and details are correct at the time of publication, errors and omissions excepted.

All Doors

Colour match Pairs of doors should be ordered together to obtain the best colour match, bearing in mind the limitations of the materials used in the construction.

Size variations As the size of a door changes in height and/or width, the panel frequency and profile can change, therefore doors of the same style but of different sizes can be significantly different in appearance.

Clearances All doors require operating clearances, i.e. the gap between the door panel and frame opening, these are inbuilt during manufacture and should not be reduced by means of infills, or draught-proofing.

Deflection When in the open position, all doors will display a level of vertical deflection or 'sag' across the width of the panel. Individual manufacturers' specifications should be consulted for exact tolerances.

Right to Cancel

Any bespoke product which is made to measure/customised, is exempt of any cancellation rights.



Your Novoferm Stockist



Intelligent Door Solutions



Call Us Now +44 (1582) 563777

Opening times
8.30am - 5.00pm
Monday to Friday

Novoferm UK Ltd
Unit 5 - 9 North Luton Industrial Estate
Sedgwick Road
Luton
LU4 9DT
E: customerservice@novoferm.co.uk
www.novoferm.co.uk